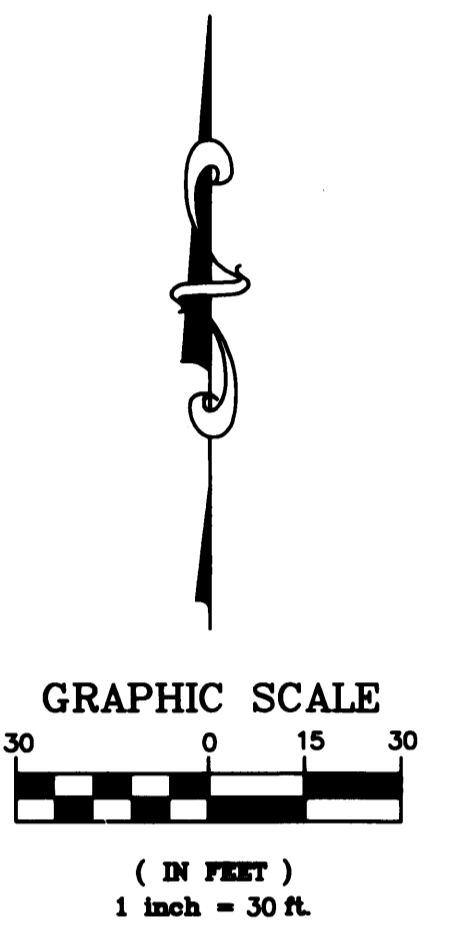
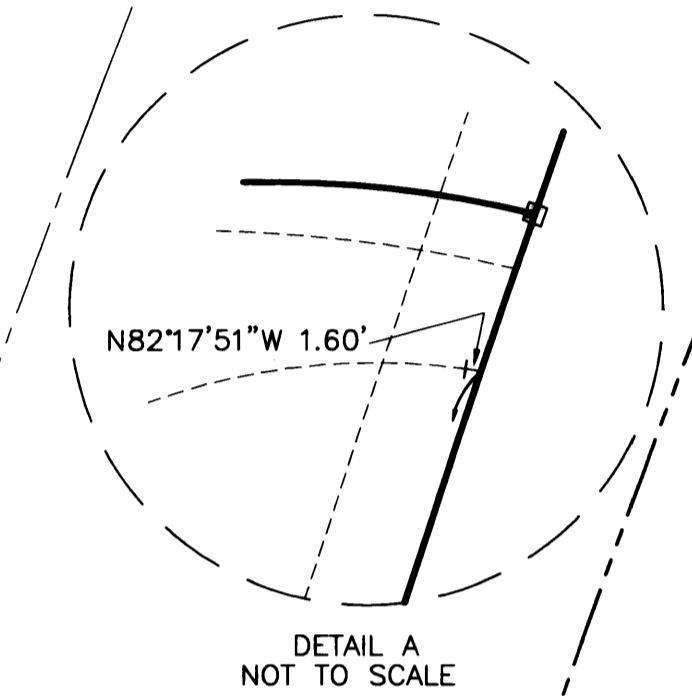
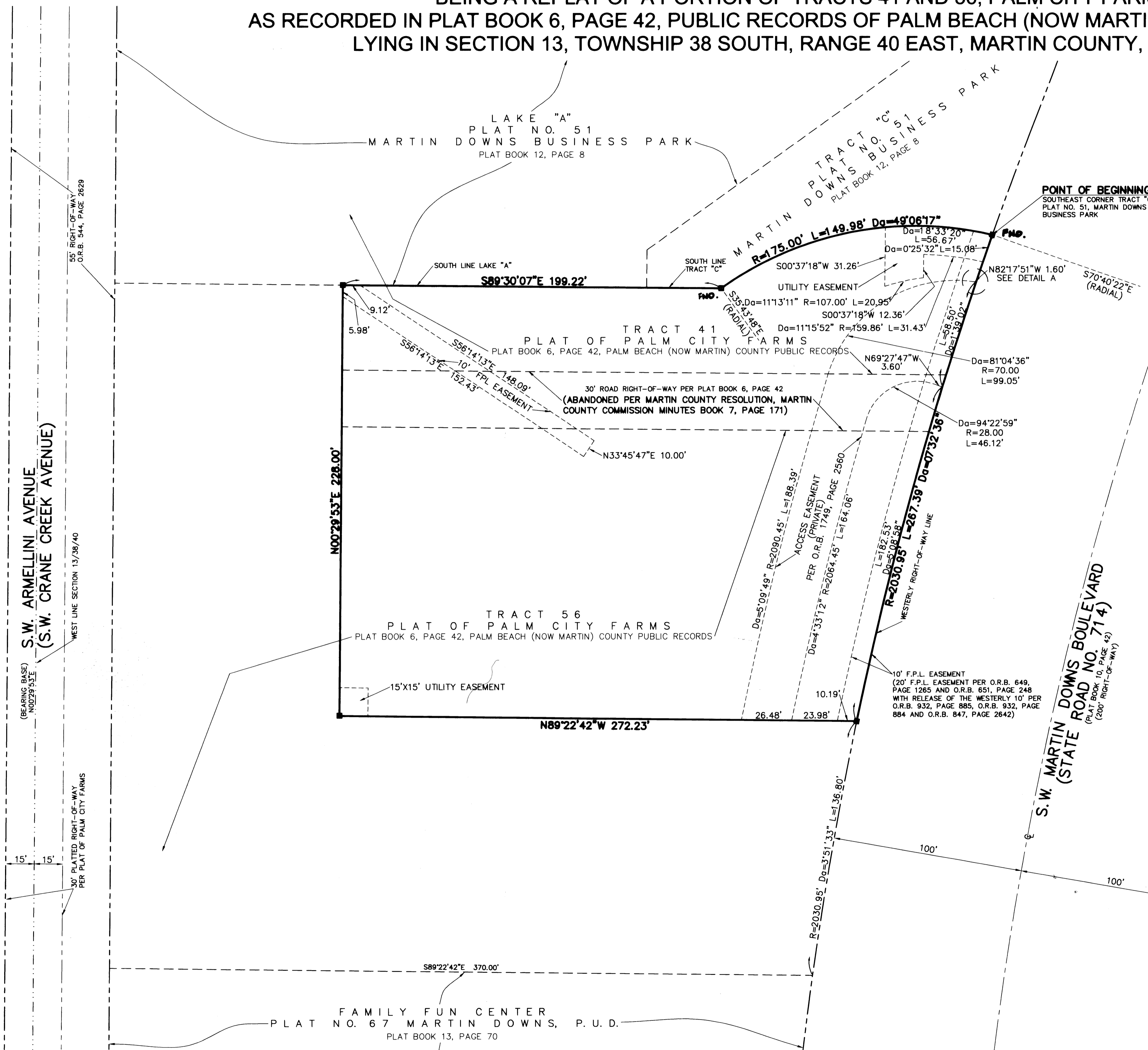


MARTIN DOWNS BUSINESS PARK - PARCEL NO. 46C, A PART OF MARTIN DOWNS, A P.U.D.

BEING A REPLAT OF A PORTION OF TRACTS 41 AND 56, PALM CITY FARMS
AS RECORDED IN PLAT BOOK 6, PAGE 42, PUBLIC RECORDS OF PALM BEACH (NOW MARTIN) COUNTY, FLORIDA
LYING IN SECTION 13, TOWNSHIP 38 SOUTH, RANGE 40 EAST, MARTIN COUNTY, FLORIDA



BEARING BASE
THE WEST LINE OF SECTION 13, TOWNSHIP 38 SOUTH, RANGE 40 EAST, IS TAKEN TO BEAR NORTH 00°29'53" EAST AND ALL OTHER BEARINGS SHOWN HEREON ARE RELATIVE THERETO.

- LEGEND**
- O.R.B. - OFFICIAL RECORDS BOOK
 - ⊙ - CENTERLINE
 - - P.R.M. (PERMANENT REFERENCE MONUMENT) SET NO. LB 959
 - U.E. - UTILITY EASEMENT
 - D.E. - PRIVATE DRAINAGE EASEMENT
 - Da - CURVE DELTA ANGLE
 - S.E. - SANITARY EASEMENT
 - R - RADIUS
 - L - ARC LENGTH
 - F.P.L. - FLORIDA POWER AND LIGHT COMPANY
 - - P.R.M. (PERMANENT REFERENCE MONUMENT FOUND NO. R.L.S. 2633)
 - FND (FOUND)

THIS PLAT, AS RECORDED IN ITS ORIGINAL FORM IN THE PUBLIC RECORDS, IS THE OFFICIAL DEPICTION OF THE SUBDIVIDED LANDS DESCRIBED HEREON AND WILL IN NO CIRCUMSTANCES BE SUPPLANTED IN AUTHORITY BY ANY OTHER FORM OF THE PLAT, WHETHER GRAPHIC OR DIGITAL. THERE MAY BE ADDITIONAL RESTRICTIONS THAT ARE NOT RECORDED ON THIS PLAT THAT MAY BE FOUND IN THE PUBLIC RECORDS OF THIS COUNTY.

CONSULTING CIVIL ENGINEERS, SURVEYORS & MAPPERS
lbfi INC.
 "Partners For Results, Value By Design"
 3550 S.W. Corporate Parkway, Palm City, Florida 34990
 (772) 286-3883 Fax: (772) 286-3825
 BPR & FBPE License No: 958 www.lbfi.com

2 2
Sheet of